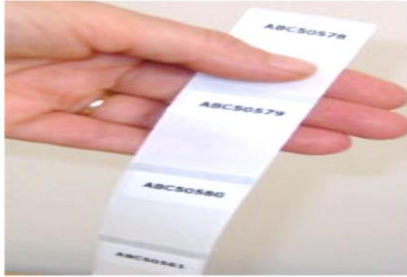


STICKY TAGS MANUAL ON HOW TO USE THE LABELS

HOW TO USE WRAP AROUND



IT'S A CLEAR LABEL WITH A WHITE COATED PORTION AT THE TOP AS PER THE PICTURE SHOWN ON THE RIGHT

SIMPLY PEEL OFF THE PEN WRAP AROUND LABEL FROM THE WHITE COATED AREA

MAKE SURE THE SURFACE OF THE PEN IS CLEAN. APPLY THE WHITE COATED AREA OF A LABEL TO A PEN AND WRAP THE REST OF THE LABEL WHICH IS CLEAR AROUND THE PEN

YOU HAVE SUCCESSFULLY LABELED YOUR PEN

HOW TO USE SHOE LABELS

NB!!! THERE'S (BLUE & WHITE) AND CLEAR / COLOURLESS LABELS PROVIDED FOR SHOES..PLZ USE BOTH!!!!



ANY SMOOTH,
CLEAN, DRY,
DIRT/GREASE
FREE SURFACE
WOULD BE
PERFECT

SIMPLY PEEL
OFF THE
BACKING
AND STICK
THE BLUE
ROUNDED
LABEL
INSIDE THE
HEEL OF THE
SHOE

STICK THE
CLEAR FINAL
CLEAR COVER
LABEL ON TOP
OF THE SHOE
LABEL ABOVE
TO AVOID
FADING AND
SMASHING OF
THE STICKER

YOU HAVE
SUCCESSFULLY
LABELED YOUR
SHOES

PLEASE SEE THE BACK OF THIS PAGE MORE INSTRUCTIONS

HOW TO USE IRON ON LABELS
(YOU WILL NOTICE THESE LABEL HAVE
LINES DRAWN IN BETWEEN THE NAMES)



HEAT IRON TO
THE "COTTON
SETTING"

DO NOT USE THE
STEAM
FUNCTION, USE
ONLY DRY
IRON

PLACE LABEL
FACED UP ON
CLOTHING THEN
PUT A DRY CLOTH
ON TOP OF THE
LABEL, IRON FOR 15
SECONDS , LET IT
COOL OFF AND IRON
AGAIN FOR
ANOTHER 15
SECONDS . REPEAT
IRONING 3 TIMES
UNTIL LABEL IS
STICKED PROPERLY
ON CLOTHING

YOU HAVE
SUCCESSFULLY
LABELED YOUR
CLOTHING LABEL!

HOW TO USE MULTIPURPOSE AND SMALL ITEM LABELS



SMALL ITEM LABELS CAN BE USED ON RUBBERS OR SHARPENERS OR SCISSORS. MULTIPURPOSE LABELS CAN BE USED ON LUNCHBOXES, WATER BOTTLES, RULERS, PRITT E.T.C.



THE SURFACE MUST ALWAYS BE CLEAN. SIMPLY PEEL OFF THE MULTIPURPOSE LABEL OR THE SMALL ITEM LABEL OFF THE BACKING PAPER



PLACE THE LABEL ONTO THE CLEAN, DRY, SMOOTH SURFACE. RUB YOUR FINGER FIRMLY OVER THE LABEL ONCE ATTACHED TO ENSURE THAT IS FULLY ADHERED



YOU HAVE SUCCESSFULLY LABELED YOUR LUNCH BOX AND SMALL ITEMS